

# Concrete Countertops



## Cast-in-Place Countertops



Acid Stain: Ebony, Epoxy, Marble Round Edge



Color: Coal, Epoxy, Regular Edge



Acid Stain: Ebony & marigold, Epoxy, Regular Edge



Color: Mocha (Artcrete), Texture: Granite, Marble Round

## Pre-Cast Countertops



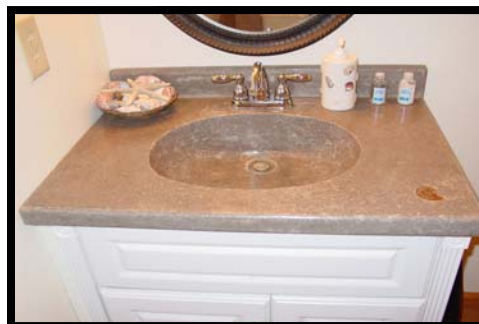
Color: Coal with Custom Mold with Buddy Roads Sealer



Pressed Custom Color Mocha Blend, Buddy Roads Sealer



Color: Slate Green, Polished, Buddy Rhodes Sealer



Pressed Charcoal with Brown Paste, Fossil Insert

# Color Charts for Countertops

## Buddy Rhodes Color



bone



brick



sand



slate



sky



straw



wheat



universe



ash



earth



mushroom



moss



smoke



wine



chocolate



coal

## Acid Stains



amber



aqua marine



burnished copper



heritage green



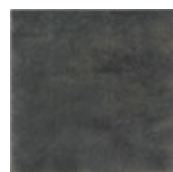
mahogany



marigold



moss green



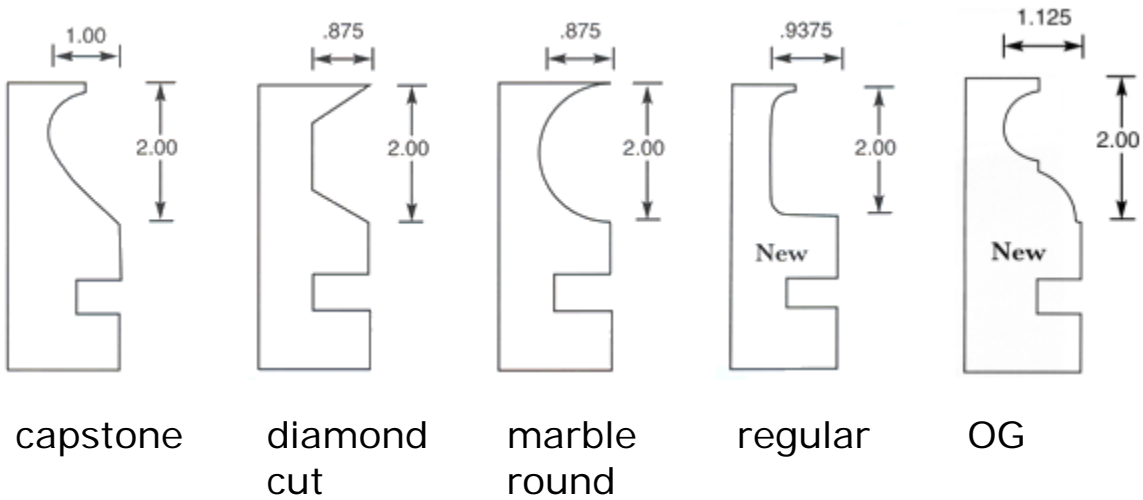
onyx



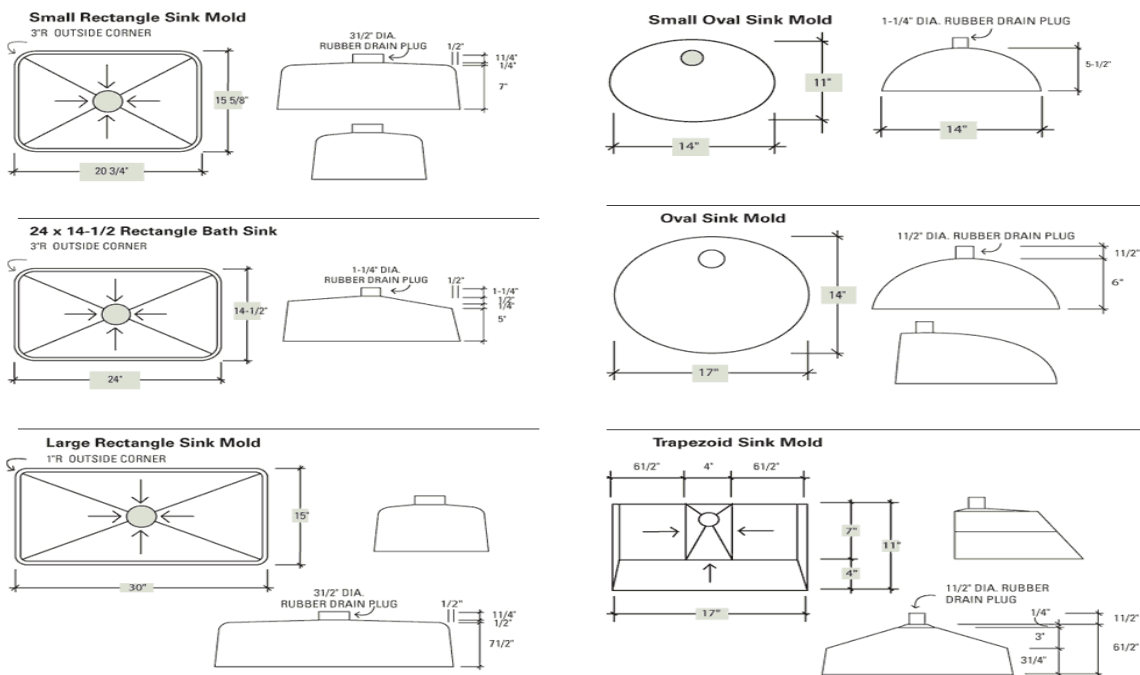
powder blue

# Concrete Countertop Molds

## Stegmeier Cast-N-Place



## Buddy Rhodes Pre-Cast Sink Molds



# Concrete Countertops

Dear Valued Customer,

Thank you for choosing Concrete Tailors, LLC for you concrete countertop. This memo is to inform you the common details of “cast-in-place” and “pre-cast” concrete countertops. Cast-in-place countertops are formed on top of existing structures at your place. Pre-cast countertops are formed and finished at our office and then delivered to your site.

Cast-in-place countertop method:

Cast-in-place countertops are 4000psi concrete using Stegmeier countertop edge form. All tops will have wire mesh and 3/8” rebar for structure. Small hairline cracks are normal at the corners of sink block-outs or turns. Because of the process involved, please be resolved that the countertops can not be used until all surface sealing and finishes are complete. Any early usage may cause undesired staining, rings or blemishes in the surface and will not be covered under warranty.

Three types of “pre-cast” countertops:

- 1) Pre-cast “pressed” method is a signature style invented by Buddy Rhodes. It is a way of “pressing” the base material/color then the secondary color is back filled with a paste. This gives the countertop a marbled effect. The customer will need to choose a base color and a secondary fill color for this method.
- 2) Pre-cast “pour & vibrate” method is typically one color casting that takes on the characteristics of the form when vibrated. This method can be light sanded, ground to show aggregates and/or polished. The customer will need to choose one base color for this method.
- 3) Pre-cast “GFRC” (Glass Fiber Reinforced Concrete) method is like “pour & vibrate” in that it takes on the characteristics of the form but can be poured in reduced thickness 3/4” to 1” which reduces weight by 30 to 50 percent. This method requires extra effort to grind and show aggregate due to no large aggregate in the mix design.

Common Details: All methods may be polished and inlayed with fossils or a variety of things to make them unique. Reinforcement is placed in all countertops, which maintains the integrity and strength of the countertop. However small hairline cracks are normal but are virtually unnoticeable and the reinforcement holds the piece tight.

Thanks once again for choosing Concrete Tailors, LLC for your concrete countertop needs.

Sincerely,  
Concrete Tailors LLC

## Preferred Choices

Method Choice \_\_\_\_\_  
Base Color \_\_\_\_\_  
Fill Secondary Color \_\_\_\_\_  
Face Form Style \_\_\_\_\_  
Sand, Grind and/or Polish \_\_\_\_\_  
Acid Stain and/or Polish \_\_\_\_\_  
Sealer Choice \_\_\_\_\_  
Signature \_\_\_\_\_ Date \_\_\_\_\_  
Printed name \_\_\_\_\_

